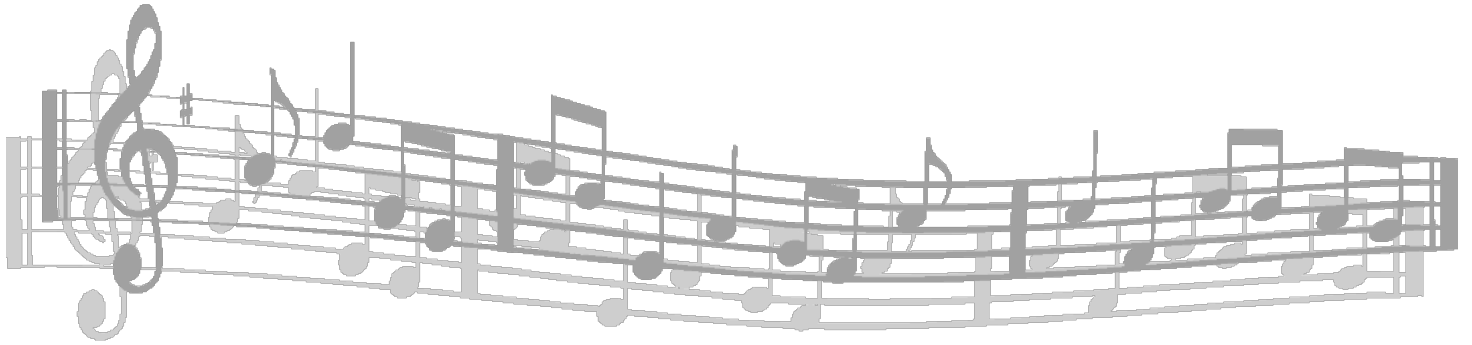


CARIBOO FESTIVAL



SYLLABUS

For the April 2017 Cariboo Festival

www.cariboofestival.ca

***Register on-line from December 15, 2016
to February 10, 2017***

*The mission of the Festival experience is
to travel with others
along the path to artistic excellence.*

WELCOME

The Cariboo Festival Board and Committee extend a warm welcome to all performers, volunteers, teachers, adjudicators, sponsors and others involved with the 2017 Cariboo Festival.

ON-LINE REGISTRATION WILL BE OPEN FROM DECEMBER 15, 2016 to FEBRUARY 10, 2017. If you do not have access to the internet, or experience any challenges with registration, please contact Ann Smith at 250-305-9755, who will assist you with registration.

The goal of the Cariboo Festival Society is to encourage the development of the arts within the community of Williams Lake and surrounding area. Through a month-long spring festival, the Cariboo Festival promotes educational and artistic growth in music—voice, piano and a variety of instruments; and in Speech Arts. We serve hundreds of participants from the community, including schools and community choirs, through individual and group classes during the Festival, and an Honours Concert at the end of the Festival.

The way our Festival works is that participants sign up for individual or group classes prior to February 10, 2017, through an on-line registration process. In March, the program is announced. Participants then perform their selection at the date and time indicated in the program in front of an audience as well as the Adjudicator for that discipline. The Adjudicator provides written feedback for every participant, as well as a mark, and spends time speaking with each “class”, providing general feedback and as much individualized feedback as possible. Individual marks are never announced, however are recorded on the participants’ marking sheets which are provided after the adjudication occurs. Highest “gold standing” (a mark of 85 or more) are generally announced in the class, but again, not the mark itself. The Festival Committee seeks out and hires positive Adjudicators, who are in tune with our values of positive reinforcement, celebration of the arts, and how to improve one’s skills.

Participants receive instruction by highly qualified adjudicators from around British Columbia and Alberta, and eligible entrants are recommended to proceed to the annual provincial festival held in a different British Columbia community every year.

The Cariboo Festival Society is registered under the *British Columbia Society Act*, affiliated with Performing Arts BC, and a member of the Williams Lake Community Arts Council.

The 2017 Cariboo Festival offers a full complement of classes and awards in each discipline. Please read the Syllabus carefully to note any changes from previous years’ guidelines and rules, discipline-specific rules, and class descriptions. All registrants and their teachers are asked to please note the rigid stipulation that only originals may be used in the Cariboo Festival. Any use of photocopies places Cariboo Festival Directors, as well as the performer, at legal risk under copyright infringement.

The spring festival and all the preparations—arranging for adjudicators and venues, preparing the syllabus and programs, organizing concerts and awards, publicity, website development, and fundraising—are planned and carried out by dedicated and caring volunteers who make up the Festival Committee. We are always looking for ways to improve the festival. New volunteers and award sponsors are always welcome!

Dates for the 2017 Cariboo Festival

(Subject to change)

Speech Arts	April 18, 19 (T, W)	
Band/ Instrumental	April 20, 21 (Th, F)	
Vocal and Choral	April 24, 25 (M, T)	
Piano	April 26, 27, 28 (W, Th, F)	
Honours Concert	May 6 (Saturday, 7:00 pm)	
Provincial Festival	May 28- June 1	Kamloops BC www.bcprovincials.com
National Festival	August 10-12	Ottawa ON www.fcmf.org

Cariboo Festival Society Board and Committee

Ann Smith	ann.smith@axis.bc.ca 305-9755	President, Registration
Carrie Barker	carriestudio@telus.net 392-4970	Secretary
Jane Perry	cariboojane@shaw.ca 392-3475	Past President, Treasurer
Anne Brown	anniebananie_17@hotmail.com	Properties
Raeleen Campsall	raeleen.campsall@gmail.com	Awards, Community Arts Council
Christine Constabel	ceconstabel@gmail.com	Band/ Instrumental
Betty Dryden	bettydryden@gmail.com	Publicity
Michelle Erlandson	kdo88@shaw.ca	Speech Arts
Heather Froese	heatherfroese@shaw.ca	Piano
Sharon Hoffman	sherwood708@hotmail.com	Vocal/ Choral
Ana Rawlek	anaderawlek@yahoo.ca	Volunteer
Sheila Wyse	smwyse@me.com	Volunteer
Laura Zimmerman	lczjma@gmail.com	Volunteer

Cariboo Festival General Rules

- Cariboo Festival participants may only use published originals or documents available in the public domain. Photocopied music, scores and scripts are not allowed under any circumstances.
- To conform to privacy and copyright laws and to avoid distracting participants, the use of cameras, video cameras, tape recorders and cell phones is prohibited during performances and adjudications. Photos may be taken only after the class is completed. Exceptions may be made for the press.
- Please keep the Cariboo Festival scent-free for everyone.
- **Entrants experiencing financial difficulties should include a short application letter with their entry to request the waiving of their entry fees. Applications must meet the entry form deadline.**

1. The Cariboo Festival Society is open to anyone in B.C. Participants may compete from other communities, however they would not be recommended to represent the Cariboo Festival at Provincials unless there are no local participants eligible for recommendation in that category.
2. The Cariboo Festival Society is for amateurs only with the exception of the adult adjudication-only classes and family or student teacher classes. An amateur is defined as one whose principal income is not derived from musical or dramatic sources. Occasional remuneration for services by a student intended to be used for further study does not contradict the above definition of an amateur.
3. The Festival Committee reserves the right to create classes as deemed necessary, or to reassign any entry to a more suitable class.
4. The correct entry form must be used for the discipline (piano, vocal, band and instrumental, and speech arts). There will be no changes or substitutions by registrants after the entry deadline.
5. As a courtesy, please notify the Festival Committee of withdrawals.
6. Preschool children are encouraged to sit toward the back of the venues during performances unless they are participating in the Festival. All performers deserve a quiet venue to present their work, and so we also ask that children having a hard time remaining quiet please be removed from the venue.
7. **The adjudicator's decision in all matters of adjudication is final.** Complaints, protests, or representations of any kind concerning the adjudication will be considered by the Festival Society if made in writing to the Cariboo Festival Secretary at 629 Pinchbeck Street, Williams Lake, B.C. V2G 1E6 within 24 hours after the event in question, either postdated by regular mail or by email. A letter of complaint must be accompanied by a protest fee of \$20 to be returned if the complaint is upheld.
8. Complaints apart from an adjudicator's decision must use an official protest form (available at all sessions) stating the nature of the complaint. This must be received by the Cariboo Festival Society no later than one week after said incident.
9. Violation of rules may result in disciplinary action.
10. **GOLD** (85% and over) Excellent performance **SILVER** (80 – 84%) Good performance
BRONZE (75- 79%) Fair performance **PARTICIPANT** (Below 75%) Less than fair
11. A participant who is unable to participate due to medical reasons may be refunded for fees over \$20. A request for a refund, along with a doctor's note, must be submitted to the Festival Committee in a timely manner.
12. All participants should be prepared to perform at the Honours Concert if asked to do so by the Festival Committee.
13. In order to be recommended for Provincials, a participant must perform in at least two (2) solo classes at their local festival at an appropriate level, and receive Gold Standing in both classes. Please consult the detailed Syllabus for Performing Arts BC ("Provincials") at www.bcprovincials.com if you are recommended to Provincials so that you do not miss any important information.
14. In the event of discrepancy of information between this document and other Cariboo Festival documents, this document (the 2017 Syllabus) will take precedence. Award information is subject to change without notice.

Performance Guidelines

1. Participants should be at the venue indicated in the program (which will be available on-line in March, 2017) at least 15 minutes before the start of the class. Participants forfeit their competitive status if not present when called upon to perform. Participants are expected to be present for the entire class. Participants and spectators may enter and leave the hall discreetly between performances but not during performances or adjudications.
2. Participants should wait for the adjudicator's signal before beginning. After performing, he or she should sit in the front row of the performance hall in readiness for the class adjudication. In order to increase the benefits of the Festival experience, a performer should have some background knowledge of his/her selections, such as the musical period, style, composer and any other pertinent information. Familiarity of the selections of fellow participants can also enhance a competitor's experience.
3. Only authorized personnel are allowed in the performance area. Audience members are not permitted to speak to the adjudicator.
4. Anyone with complaints is asked to please refer to the General Rules.
5. A knowledge of stage decorum, suitable dress and courtesy to fellow performers is all part of the Festival experience. Teachers and parents are urged to encourage participants to become acquainted with this knowledge.

6. Rehearsals will not be allowed in the Festival venues prior to performance.
7. The use of printed music in performance may affect the adjudication. Therefore, memorization of selections is recommended except for chamber groups.
8. **Again, the Cariboo Festival committee emphasizes that PHOTOCOPIES ARE NOT ALLOWED.** The Festival Executive and possibly the individual are liable to very stiff fines under the *Copyright Act*. If a selection is out of print, the individual must provide written permission from the publisher.
9. When using the Internet to acquire music and speech arts material, participants must provide proof of public domain or must show evidence of permission to copy from the Internet or proof of purchase. Bring proof and/or receipt from the Internet site on the day of performance, and present to the secretary prior to performing.
10. Any individual or group performing at the Honours Concert must be prepared to remain until the end of the concert or decline to perform, with the exception of young children or young children's groups where an intermission will be provided for ease of exit.

Entry Rules

1. All entries to the 2017 Cariboo Festival must be completed on-line by **February 10, 2017**. Go to **www.cariboofestival.ca** to register on-line. All syllabus information is available on the site. Registration fees must also be received by February 10. If you are *not* paying by Paypal, but rather by cheque or cash, you must mail or drop off your cheque or cash to be received by February 10. If you choose this method of payment, please enclose some notation of what the payment is for, either a hand-written explanation (name, discipline, class) or a print-off of the registration confirmation.
2. **Late entries are not accepted. On-line registration will close at midnight on February 10, 2017.**
3. After the closing date all participants must perform their selection as entered, or withdraw. No substitute performers are allowed.
4. Age is taken as of December 31, 2016.
5. Entries must specify length of time of selections.
6. If a participant requires financial support related to entry fees, please contact a member of our Committee (listed at the beginning of this Syllabus) prior to the registration deadline of February 10th.
7. A participant may enter only one selection per class unless otherwise specified.
8. Each participant is responsible for providing the adjudicator with an original (ie non-photocopied) copy of their selection. Music must be given to the adjudicator's secretary before the performance and may be picked up immediately following the adjudication.
9. To assist the adjudicator, participants should erase all unnecessary markings on the music, number the measures at the beginning of each line, and paper clip or "Post-it" the page for ease of finding.
10. The participant must have an original copy of their selection available in the performance hall or they will forfeit their competitive status, with the exception of fiddle classes.
11. Classes will be conducted in a workshop format as a learning experience. Discussion between the adjudicator and the participant is encouraged.
12. Participants and teachers are advised that the quality and standard of selections chosen will be reflected in the Adjudicator's comments and marks.
13. Marks will be indicated on adjudication sheets, but only highest Gold standings (not specific marks) in the class will be announced.

Rules specific to all Music Disciplines

1. Important reminder: Cariboo Festival participants may only use published originals or documents available in the public domain. Photocopied music, scores and scripts are not allowed under any circumstances.
2. Selections must be performed in full, as stated in syllabus of participant's choice. Please state on the entry form the syllabus used (Conservatory Canada, Royal Conservatory of Toronto, Victoria Conservatory, etc.). Please note that classical sonatas are to be one movement only, even when two are required for the grade level. See Classical section under relevant grade.
3. Participants may also apply to a recognized Conservatory to have a piece graded, and be prepared to supply written documentation of the grading, to satisfy the intent of the above rule (#2) for the Festival Committee, which recognizes that there are many suitable pieces of music not published in a syllabus. The Festival Committee also wishes to promote a celebration of music.
4. The use of CD accompaniment is not recommended; however, if there is no other alternative, check with the Director of the discipline listed in this Syllabus at the time of registration.
5. Participants considering the Provincial Festival are reminded that Canadian works are encouraged.

Rules specific to the Piano Discipline

1. Important reminder: Cariboo Festival participants may only use published originals or documents available in the public domain. Photocopied music, scores and scripts are not allowed under any circumstances.
2. A participant may enter a particular selection only once, and may not enter the same composition for two consecutive years. For example, a Grade 10 student entering for the second year at that grade level may not perform the same movement from the same sonata as performed the previous year. However, it would be acceptable to perform another movement from the same sonata.
3. For introductory level entries, composers must be from a recognized syllabus.
4. Participants must progress to the next highest grade each year that they enter the Festival, with the exception of Grades 9, 10, and ARCT, each of which they may enter for two years.
5. **Participants at the Intermediate and Senior levels must announce the title of their selection as well as the composer before performing, or they are permitted to ask the Secretary to announce the title and composer of the selection. Junior performers are encouraged but not required to announce their selection title and composer prior to performing.**

Rules specific to the Band and Instrumental Discipline

1. Important reminder: Cariboo Festival participants may only use published originals or documents available in the public domain. Photocopied music, scores and scripts are not allowed under any circumstances.
2. Levels refer to the number of years of study.
3. Ensemble entries must enter at the level of the most advanced member of the group.
4. **Participants at the Intermediate and Senior levels must announce the title of their selection as well as the composer before performing, or they are permitted to ask the Secretary to announce the title and composer of their selection. Junior participants are encouraged to announce their selection title and composer prior to performing.**

Rules Specific to the Vocal Discipline

1. Important reminder: Cariboo Festival participants may only use published originals or documents available in the public domain. Photocopied music, scores and scripts are not allowed under any circumstances.
2. Children and youth singing pop songs must use age-suitable lyrics.
3. **Participants at the Primary, Junior, Intermediate and Senior levels must announce the title of their selection as well as the composer before performing.**

Rules specific to the Choral Discipline

1. Important reminder: Cariboo Festival participants may only use published originals or documents available in the public domain. Photocopied music, scores and scripts are not allowed under any circumstances.
2. For Festival purposes, a school choir is made up of chosen voices and may be from one or several classrooms.
3. A school chorus is an entire classroom participating as a group to encourage all class members to sing at the festival.
4. Choirs should prepare two selections, both own choice contrasting in style and tempo.
5. Original music must be provided for the adjudicator. Accompanists and Directors must have original music as well. No photocopied music is permitted.
6. Candidates are reminded that the choice of music will be considered, and may affect the final standing.
7. On the evening of your choir adjudication, there will be a performance featuring all choirs. Awards will be given at this time.
8. Any enquiries are to be directed to the Vocal/Choral Director.
9. **Participants at the Primary, Intermediate and Senior levels must announce the title of their selection as well as the composer before performing.**

Rules Specific to Speech Arts and Drama

1. Important reminder: Cariboo Festival participants may only use published originals or documents available in the public domain. Photocopied scripts are not allowed under any circumstances.
2. Entries must be completely filled out with title and author of selected pieces.
3. Participants must have an original copy of their selection (book or copyright-free Internet material, etc.) available in the performance hall or they will forfeit their competitive status. Please check with the Speech Arts Director if necessary.
4. Please indicate on your entry form if you or your group require special arrangements for the time of performance, such as ensuring students are back at school in time to make the bus.
5. Works must be performed by memory unless exemption of memory is indicated in the Class description.
6. **Participants at the Junior, Intermediate and Senior levels must announce the title of their selection as well as the author before performing.**

HONOURS AWARDS

(Presented at the Honours Concert May 6, 2017)

The Cariboo Festival Board and Committee reserve the right to choose the certificate, medal, trophy or plaque for any Cariboo Festival Award.

Please note that Honours Awards may be restricted to Cariboo Festival participants who live in the catchment area of the Cariboo Festival, which includes School District 27 communities other than 100 Mile House. Many of our Honours Awards are made possible by donation from community members or businesses in Williams Lake and surrounding areas, and in some cases these donors specify whether or not the Award is restricted to participants in our Cariboo Festival catchment area.

Piano Awards

First Year of Study Award: This \$25 bursary is awarded to the participant who achieves the highest mark in the First Year of Study class.

Senior Piano Competition Award: First place receives \$100, second place receives \$50. Participants must play, from memory, two or more contrasting selections of Grade 9 or higher, time not to exceed 15 minutes (performance will be stopped if time is exceeded). Contrast and content of the pieces will be taken into consideration by the adjudicator. Participants competing for this award must also enter a Quick Study or Sight Reading class.

H. J. Martin Award: This plaque accompanied by a \$100 bursary is sponsored by the Cariboo Festival in appreciation of Mr. Martin's many piano tunings for past festivals. This plaque is an Adjudicator's Choice of a promising intermediate participant. An eligible participant must have entered a minimum of three pieces, of contrasting styles, in the Classical Conservatory Division of the Festival piano syllabus, which can but does not have to include a Concert class.

Gail Carson Romantic Competition: This perpetual plaque and \$100 bursary award is open to participants between the ages of 11 and 16 from Grade 5 Piano and up, performing Chopin, Mendelssohn, Brahms, Schumann, Schubert or Liszt, from memory. This plaque is an Adjudicator's Choice and is donated in memory of Gail Carson and in recognition of musicianship and interpretation of Romantic music by a young performer.

Junior Piano Award: This \$50 bursary is awarded to one participant in the Junior category who enters three graded pieces of contrasting styles from any of the recognized Classical Syllabi (examples: RCM, VCM, CCM, etc.), and can include one (1) ensemble entry. The award will be given to the participant with the highest average mark based on their applicable pieces.

Sommer-Ivory Keys Award: This \$25 bursary is to be awarded to a promising participant at the Junior or Intermediate level. The participant must have performed a minimum of 3 pieces, 2 of which must be from a recognized Conservatory Syllabus such as The Royal Conservatory, Canada Conservatory, Contemporary Idioms Syllabus, or any other recognized Conservatory Syllabus. One of the selections must be from the Contemporary Idioms Syllabus. One selection may be chosen at the teacher's and participant's discretion not listed in a syllabus but should reflect the participant's grade level as closely as possible. Emphasis is to be placed on interpretation ability of the student, not technical perfection. This is an Adjudicator's Choice Award.

E. G. Woodland Bursary: This bursary is presented to a participant of outstanding ability and musical talent who has competed in the Senior Division as a soloist. This \$150 bursary is provided to help a student further their musical career and is open to students of any instrument.

Vocal Awards

Cariboo Festival Bursaries: These bursaries are awarded each year to those participants who have attained gold level and the highest mark in the concert classes of junior, intermediate and senior categories. The amount awarded is \$100 to each level. In the Junior A and Junior B levels the award will be split, giving a scholarship of \$50 to each.

Primary Concert Class Award: A trophy will be awarded to a participant who has attained the highest gold

standing in the primary concert class.

Primary Musical Theatre Award: A trophy will be awarded for the highest gold standing on a single Musical Theatre piece.

Musical Production Awards: Bursaries of \$50 will be given to the participants earning the highest gold standing on two (2) contrasting Musical Production pieces at the Jr. A, Jr. B, Intermediate, and Senior Levels.

Choral Hi-Point Adult Choir Award: This \$100 bursary is given to the highest scoring choir that attains a gold level standing.

Choral Hi-Point Youth Choir or Ensemble Award: This perpetual award and keeper trophy will be given to the highest scoring youth choir or ensemble who has attained the highest mark in the gold-level standing.

Choral Directorship Award: This award of \$100 is given to the Choir Director who has displayed the highest qualities of directing.

Acorn Encouragement Awards: These Adjudicator's Choice awards are \$25 each (two in total) for "up and coming" participants who show commitment and dedication to singing, and working with the adjudicator. Not limited to Gold Standing performances.

Instrumental Awards

Instrumental Award: A bursary of \$100 will be presented to the most outstanding participant in the competitive classes of the Instrumental Division. This bursary is provided to help participants further their musical education, and is open to students of any instrument, except piano.

Guitar Seller Instrumental Awards: Criteria for these awards will be announced at a later time.

McDonalds Restaurant Challenge Trophy: This is an Adjudicator's Choice award, presented as a trophy and a \$100 Bursary to the best all-round participant in the instrumental section of the Cariboo Festival. Eligible students must perform at least two contrasting solo pieces, as well as perform in a group (i.e. Duet, Ensemble or Band).

TubaJohn Encouragement Awards: This Adjudicator's Choice award includes four (4) \$25 bursaries for a total of \$100 to be given to younger instrumental participants showing promise.

Bill Downey Memorial Trophy: This \$25 bursary will be awarded to the youngest fiddle player entered in the Festival.

Rotary Best Band Award: This perpetual plaque is awarded to the band that achieves the highest gold-level standing.

Old Time Fiddlers Ensemble Award: This is a \$150 Bursary and will be awarded to the top Ensemble group (any instruments) achieving a gold standing.

E. G. Woodland Bursary: This Bursary is presented to a participant of outstanding ability and musical talent who has competed in the Senior Division as a soloist. This \$150 bursary is provided to help a participant further their musical career and is open to students of any instrument.

Speech Arts & Drama Awards

Public Speaking Award: A \$50 bursary to the participant achieving the highest gold-standing mark. Or Best overall performance wording.

Cariboo Festival Choral Speech Award: A perpetual plaque for the best overall performance of Elementary students.

Cariboo Festival Creative Performance Award: An Adjudicator's Choice award, in the form of a creative trophy for the most creative performance.

Cariboo Festival Elementary Drama Award: This perpetual plaque is given for the most deserving drama performance of Elementary students who attain a gold level standing.

Cariboo Festival Secondary Drama Award: This perpetual plaque is given for the most deserving drama performance of Secondary students who attain a gold-level standing.

Adjudicator's Choice Award: A \$25 bursary for the Adjudicator's choice of a promising participant.

Overall Speech Arts Award: A \$100 bursary for participant having achieved a Gold standing with a minimum of 2 entries. Adjudicator's Choice.

Piano Class Descriptions

*Please refer to the Honours Awards section for award descriptions.
Please refer to Rules specific to Piano Discipline before submitting entries.*

Beginner Division:

Primary: These classes are for younger students, specifically aged 5, 6, or 7 as of December 31, 2016. The class name is followed by class number. Example: Class name Primary age 5 Number PR5

First Year of Study: This class is for students of any age, however they must be within their first year of piano study.

Introductory classes are divided into two categories: **Intro A** classes for students at the Prep A level of RCM, and **Intro B** classes for students at the Prep B level of RCM or normal introductory level.

Example: A level Baroque – class number 100A B level Baroque – class number 100B

A student entering the A level class must move up to B level or higher the following year.

Note that Intro A and Intro B classes are not available for Impressionistic, Sight Reading, or Quick Study classes below.

Classical Conservatory Division: One selection by any composer / style from the period. See examples below.

Baroque (1600 to 1750): Bach, Handel, Telemann, Purcell, Leopold Mozart, Couperin, Kirnberger, Krebs, Rameau, Scarlatti, or any other composer of this period.

Classical (1755 to 1825): Sonatina, Sonata, Variations or any piece written in classical form by a composer from this period. Diabelli, Clementi, Kuhlau, Haydn, W.A. Mozart, Beethoven or any other composer from this period.

Romantic (1820 to 1900): Short Character pieces, waltz, nocturne, by Schubert, Schumann, Chopin, Liszt, Brahms, Mendelssohn, or any other style or composer from this period.

Impressionistic: Grade 5 and up only. Faure, Debussy, Ravel, Ibert, Grovlez, Poulenc or any other composer of this period. In intermediate and senior divisions only, Canadian compositions using this style may enter this class provided the competitor has already entered the Canadian Class.

Contemporary (1900 to present day): Milhaud, Schoenberg, Bartok, Kabalevsky, Shostakovich, Prokofiev, Nakada or any other composer of this period.

Canadian: Hanson, Coulthard, Fleming, Ridout, Ouchterlony, Marsden, Poole, Archer, or any other Canadian Composer. Check with Canadian Music Center on line for extensive list of Canadian Composers. The intent of this class is to showcase Canadian compositions. Any contestant performing a Canadian piece must enter this class before entering a Canadian piece in another class.

Solo: The intent of this class is to provide a student with the opportunity to perform another graded piece recognized by a conservatory of equal or greater difficulty than their usual grade. Please state usual grade on entry form.

Sight Reading: Grade 1 and up only. Students are encouraged to take these classes to improve their sight reading skills. Some competitions require this class to be eligible for an award. Competitor is given about 30 seconds to study music.

Quick Study: Grade 1 and up only. Students are encouraged to take these classes to improve their quick study skills. Some competitions require this class to be eligible for an award. Competitor is given at least 24 hours to study music. Memorization is not mandatory.

Contemporary Idioms Division: One selection by any composer of a particular style as presented in the Contemporary Idioms Syllabus of Conservatory Canada. Selections must be from this particular syllabus.

Contemporary Idioms includes Ballad / Blues, Swing, Rock and Other Genres: See Contemporary Idioms Syllabus for details of each class category.

Supplementary Division: Competitors entering these classes may perform any selection of equal or greater difficulty than their usual grade. Please state usual grade on entry form. Pieces selected in these classes are not found in any syllabus.

Supplementary Division includes Jazz (any era of Jazz music, approximately 1890 to present, ie. Dixie, ragtime), **Popular** (any type of popular music including tv or movie themes), **Modern** (contemporary composers and arrangements of Classical works not found in a syllabus), **and Sacred** (any arrangement of a sacred piece).

OTHER:

Ensemble Division: Please state usual grade on entry form. Exempt from Music Discipline Rule #2.

Duet: 1 piano, 4 hands

Trio: 1 piano, 6 hands

Duo: 2 pianos, 4 or 8 hands

Concerto: Solo with orchestral accompaniment (provided by a second piano)

Family: Any of the above. Competitors must be related (mother, brother, cousin, uncle, etc.)

Student and Teacher: duet or duo but not concerto.

Concert Group Division: The intent of these classes, though not exclusively, is to provide for the convenience of **out-of-town competitors. This division is open to anyone. Pieces must be memorized. Performance will be stopped if time limit is exceeded. Contrast and content** of program will be taken into account. Each piece will be given a separate grade, and will be counted as separate pieces for the purposes of awards.

Junior Concert Group: Grade 1–4, 2-3 pieces, 10 minute time limit.

Intermediate Concert Group: Grade 5–8, 2-3 pieces, 25 minute time limit.

Senior Concert Group: Grade 9–ARCT. 3 - 4 pieces, 30 minute time limit.

A.R.C.T Graduate Concert Group: Up to 5 pieces, 40 minute time limit.

Competitions (Gail Carson Romantic Piano Competition and Senior Piano Competition): See Awards section of Syllabus for more information.

Non-Competitive Division: This is a division for anyone who does not wish to enter on a competitive basis while still experiencing the festival atmosphere of sharing their music and having it adjudicated by an authoritative educational figure other than their teacher. Participants will receive a friendly adjudication only, which is designed to encourage and promote musicality and a return to the festival in future years. These classes may vary in arrangement depending on the number of entries. Please state usual grade level or number of years of study on entry form.

Adult Piano Workshop: The Adult class provides a non-competitive nurturing atmosphere designed to encourage adults of any level to perform and partake of the adjudicator's expertise.

Original Composition Division: These classes have been arranged by length of composition rather than age group. This is designed to allow for more freedom of expression by the composition. A contestant may enter more than one composition per class. Each composition is a separate entry. Each composition must be written on manuscript paper in black ink, or it may be computer-generated. Each entry is assumed to be the original work of the individual whose name appears on the entry form attached to the manuscript. All rights to the composition will be retained by the composer. Each contestant will be expected to perform their composition in the festival or to arrange to have it performed. All composers will receive a certificate of participation. However, due to the subjective nature of this class and diversity of styles and forms, there will be no mark attached. Students will receive an adjudication only.

Piano Classes

Beginner Division

Primary	Age 5	Age 6	Age 7
	PR5	PR6	PR7
1 st Year of Study	Age 7 and under	Age 8–10	Age 11–14
	BEG1	BEG2	BEG3

Junior Division					Intermediate Division				Senior Division		
Intro A or B	Grade 1	Grade 2	Grade 3	Grade 4	Grade 5	Grade 6	Grade 7	Grade 8	Grade 9	Grade 10	Grade 11/ARCT

Classical Conservatory Division												
Baroque	100 A or B	101	102	103	104	105	106	107	108	109	110	111
Classical	200 A or B	201	202	203	204	205	206	2070	208	209	210	211
Romantic	300 A or B	301	302	303	304	305	306	307	308	309	310	311
Impressionistic						405	406	407	408	409	410	411
Contemporary	500 A or B	501	502	503	504	505	506	507	508	509	510	511
Canadian	600 A or B	601	602	603	604	605	606	607	608	609	610	611
Solo	700 A or B	701	702	703	704	705	706	707	708	709	710	711
Sight Reading		801	802	803	804	805	806	807	808	809	810	811
Quick Study		901	902	903	904	905	906	907	908	909	910	911

Contemporary Idioms Division (from Contemporary Idioms Syllabus)												
Ballad / Blues	1000	1001	1002	1003	1004	1005	1006	1007	1008	1009	1010	1011
Swing	1100	1101	1102	1103	1104	1105	1106	1107	1108	1109	1110	1111
Rock	1200	1201	1202	1203	1204	1205	1206	1207	1208	1209	1210	1211
Other Genres	1300	1301	1302	1303	1304	1305	1306	1307	1308	1309	1310	1311

Supplementary Division												
Jazz	1400	1401	1402	1403	1404	1405	1406	1407	1408	14009	1410	1411
Popular	1500	1501	1502	1503	1504	1505	1506	1507	1508	1509	1510	15211
Modern	1600	1601	1602	1603	1604	1605	1606	1607	1608	1609	1610	1611
Sacred	1700	1701	1702	1703	1704	1705	1706	1707	1708	1709	1710	1711

Original Composition Division

8 bars	12 bars	16 bars	24 bars	Open
1800	1801	1802	1803	1804

Non-Competitive Division

1 st Year	2 nd Yr	3 rd Yr	Gr 1-4	Gr. 5-8	Gr. 9-11
NC 1	NC 2	NC 3	NC 4	NC 5	NC 6

Ensemble Division

	Primary	Gr 1-2	Gr 3-4	Gr 5-6	Gr 7-8	Gr 9-10
Duet	1900	1901	1902	1903	1904	1905
Trio	All levels		2000			
Duo	All levels		2001			
Concerto	All levels		2002			
Family	All levels		2003			
Student/Teacher	All levels		2004			

Concert Group Division

Junior	Intermediate	Senior	ARCT Teacher
2100	2101	2102	2103

Adult Piano Workshop

2104

Concert Group Division

Gail Carson Romantic Piano Competition	2200
Senior Piano Competition	2300

Vocal Class Descriptions

Please refer to the Honours Awards section for award descriptions.

Please refer to Rules specific to Vocal/Choral Discipline before submitting entries.

Concert Recital Class: Three Art Songs of suitable difficulty, contrasting in tempo, key and period, and sung in the original language. Excludes Musical Theatre. Gospel allowed if piece is in graded Repertoire book.

Vocal Art Songs: Classical selection to be sung in the original language. Attention to pronunciation recommended. Classically composed songs for Piano and Voice.

Soloist and Accompanist: One Art Song of your own choice in any language. Both performers must be of age for class entered. Both performers will be adjudicated.

Opera: An aria from any standard Opera, to be sung in the original language.

Oratorio: An aria from any standard Oratorio, Mass, Passion, or Divine Hymns – sung in original language or English.

Soloist and Obligato Instrument: One selection of your own choice. Both performers may be adjudicated. Enter under the age of the oldest performer. A piano accompanist is allowed.

Quick Study: Quick Study selections are chosen by the adjudicator. Music may be picked up from the Vocal Director 48 hours before the performance.

Authentic Folk song: These are songs which have no known composer or librettist.

Contemporary Folk Song: These are songs of the 20th Century written in Folk song style, which have known composers and librettists. Examples – songs by Gordon Lightfoot, John Denver, Anne Murray, etc. May be own compositions – no Pop or Rock and Roll.

Sacred Song: Not Oratorio or traditional.

Contemporary Gospel: 20th Century Gospel selections.

Contemporary Christian: Any Christian music written post-1970.

Contemporary Pop: 20th / 21st century pop selections. Junior to senior classes. Could include musical theatre pieces without costuming or staging.

Minstrel: This class is for those who wish to accompany themselves singing. It is expected that contemporary music will be performed rather than Classical selections that require a correct posture to sustain properly executed vocal technique.

Jazz: Selections from 20th century jazz. Jr. B, Intermediate, and Senior classes only.

Blues: Selections from 20th century blues, Jr. B, Intermediate and Senior classes only.

Musical Theatre: One selection of your own choice. Costume and staging must be included. You will be adjudicated on presenting a complete piece from a Musical.

Musical Production: Only Jr. A level and higher. Performer is to present a program of 2 contrasting musical theatre selections taken from different musicals or the same musical. Adjudication will be based on the total entertainment quality of the performance (vocal and character portrayal). Selections must not have been used in any other musical theatre class by same participant. Time limit ten (10) minutes, not including two (2) minutes to change costumes between selections. Maximum one (1) prop allowed. Piano accompaniment only. Only solo performances allowed.

Contemporary Gospel Ensembles: 20th Century Gospel Song performed in two or more parts. Entered in the class with the oldest performer.

Musical Production Ensembles: One selection of your own choice in more than one vocal part to be sung as appeared in the Musical. Costume and staging are NOT optional. Two or more performers, entered under the age of the oldest competitor.

Vocal Ensembles: One selection of your own choice of suitable difficulty in more than one vocal part for two or more performers. Enter under the age of the oldest competitor.

Family Music Class: Entrants in this class must be related. One or two selections of your own choice.

School Choirs: Extra curricular Lunch Time Choirs with students from more than one class. Two selections.

School Classroom Chorus: Students from one class practicing during class time, 2 selections. May combine classes.

Scouting Guiding Canada Choir: Any choir made up of Sparks, Brownies, Guides, Beavers, Cubs or Scouts. Two selections.

Community Choir or Ensemble: Made up of members of the community who practice outside of school.

Church Choir: Made up of members of a Church Choir.

Choir and Obligato Instrument: Choirs with an integral instrumental part in their music.

Adult Non-competitive Age 18+ Non-competitive vocal classes for adults singing in any genre, for adjudication and “workshopping,” but with no awarded score. Open to both solo and group vocal performances.

Vocal Classes

	Primary Age 8 yrs and under	Junior A Age 9–11 yrs	Junior B Age 12–14 yrs	Intermediate Age 15–17 yrs	Senior Age 18 yrs and over	Adult Non- Competitive
Classical Voice						
Concert Recital Class	121	122	123	124	125	126
Vocal Art Songs						
Art Song – composed or arranged before 1830	221	222	223	224	225	226
Art Song – composed or arranged 1830-1900	321	322	323	324	325	326
Art Song – composed or arranged after 1900	421	422	423	424	425	426
Jazz	N/A	N/A	623	624	625	626
Blues	N/A	N/A	723	724	725	726
Art Song -- Other languages	726	727	728	729	730	826
Soloist and Accompanist <i>Singer and accompanist to be adjudicated</i>	821	822	823	824	825	926
Opera	N/A	N/A	N/A	921	922	923
Oratorio	N/A	N/A	N/A	1021	1022	1023
Soloist and Obligato Instrument <i>Both performers may be adjudicated</i>	1221	1222	1223	1224	1225	1226
Quick Study	1321	1322	1323	1324	1325	1326
Authentic Folk Song	1421	1422	1423	1424	1425	1426
Contemporary Folk Song	1521	1522	1523	1524	1525	1526
Sacred Song	1621	1622	1623	1624	1625	1626
Contemporary Gospel	1721	1722	1723	1724	1725	1726
Contemporary Christian	1821	1822	1823	1824	1825	1826
Contemporary Pop	1921	1922	1923	1924	1925	1926
Minstrel	N/A		2023	2024	2025	2026
Musical Theatre	2121	2122	2123	2124	2125	2126
Musical Production	N/A	2522	2523	2524	2525	2526
Ensembles						
Contemporary Gospel Ensemble	2221	2222	2223	2224	2225	2226
Musical Production Ensemble	2321	2322	2323	2324	2325	2326
Vocal Ensemble	2421	2422	2423	2424	2425	2426
Family Music Class – all levels	2921					

Choral Section

	Elementary Primary Choir Gr 1-3	Elementary Intermediate Choir Gr 4-7	Secondary School Choir Gr 8-12				
School Choirs	121	122	123				
	Gr 1	Gr 2	Gr 3	Gr 4	Gr 5	Gr 6	Gr 7
School Classroom Chorus	2521	2522	2523	2524	2525	2526	2527
	Community Youth Choir Ages 10 and under	Community Youth Choir/ Ensemble Ages 11-18	Community Adult Mixed Choir	Community Adult Men's Choir	Community Adult Women's Choir	Church Choir	
Community Choirs/ Ensembles	2621	2622	2623	2624	2625	2626	
Choir and Obbligato Instrument – all levels	2721						

Band and Instrumental Class Descriptions

Please refer to the Honours Awards section for award descriptions.

Please refer to Rules specific to Band and Instrumental Discipline before submitting entries.

Woodwind, Brass, Percussion, Recorder, and Strings

Solo: One selection. **Duet, Trio and Quartet:** One selection.

Bands: will be allowed to warm-up / tune up within their allocated performance time. Groups should be prepared to move into the performance area, set up, warm up, perform and leave the performance area within the allotted performance time. Performances longer than the allotted time limit will be stopped by the adjudicator's secretary.

Concert Band: Two contrasting selections – time limit 15 minutes.

Ensemble Band: Two contrasting selections- time limit 15 minutes.

Stage Band: Two contrasting selections – time limit 20 minutes.

Rhythm Band, Hand Bells Ensemble and Xylophones: One or two contrasting selections – time limit 15 minutes.

No limit to the number of performers. If less than 5 members, please call regarding the Entry Fee. Please state on the entry form what instruments will be used.

Recorder Small Ensemble: 5 to 10 performers. One or two contrasting selections.

Recorder Ensemble: 11 or more performers. One or two contrasting selections.

Special Instrument Division: Any instrument for which a class has not already been provided. A more advanced level of performance is expected. No age restrictions. Competitors in this division should be aware of the importance of their choice of selections and its effect on marks. Examples of instrumentation include harp or any non-traditional ethnic instrumentation.

Concert Class: For Woodwind, Brass, or Ensembles -- Two or more contrasting selections.

Junior level – 13 years and under, Level 4 or above, time limit 15 minutes.

Intermediate level – 16 years and under, Level 6 or above, time limit 20 minutes.

Senior level – 30 years and under, Level 8 or above, time limit 25 minutes.

Diploma Class: Any traditional instrument. Must be studying at a recognized music school or with a qualified teacher. Must have previously participated in the Cariboo Festival. No age restrictions. Time limit 15 minutes.

Classical Guitar Solo: One selection for each class following the class era, period and style. Composers must be from the era or time period.

Classical Guitar Duet: Two contrasting selections from different eras i.e. Baroque / Classical

Steel String Guitar - Plectrum: With the use of a pick. One selection from each class following the style of the class.

Steel String - Finger Picking: Without the use of a pick. One selection from each class following the style of the class.

Guitar Minstrel Class: A performance of a song in which the voice is an integral part of the guitar performance.

Guitar Singer/ Songwriter Minstrel: A performer who has composed their own song to be sung by the performer/ composer and who accompanies himself/ herself on the guitar. The creativity of the guitar accompaniment is as important as the song and lyrics.

Ukulele Ensemble: One or two selections. No limit on number of performers. See entry fees. If less than 5 members consider as quartet, trio, or duet.

Violin Beginners: Participants in this class are in their first year of study. One selection.

Strings: This section includes Violin, Viola, Cello, or Double Bass.

Fiddling Solo: One selection of appropriate style for class. i.e., waltz, jig, reel, other.

Fiddling Duet, Trio, Quartet: One selection of any style.

Adjudicated Family Class: Competitors must be related

Adjudicated Class for a Main Instrument with a Student Accompanist: Adjudication will be for performer of main instrument as well as student accompanist, ie accompanying will be adjudicated as well.

Strings Ensemble (Pop, Contemporary, Baroque, Classical and Fiddle: This class is intended for strings duets, trios, quartets, and larger groups to present a piece for adjudication of the ensemble's ability to work together as musicians and enjoy their performance.

Self-Composed: These classes have been arranged by length of composition rather than age group. This is designed to allow for more freedom of expression by the composition. A contestant may enter more than one composition per class. Each composition is a separate entry. Each composition must be written on manuscript paper in black ink, or it may be computer-generated. Each entry is assumed to be the original

work of the individual whose name appears on the entry form attached to the manuscript. All rights to the composition will be retained by the composer. Each contestant will be expected to perform their composition in the festival or to arrange to have it performed. All composers will receive a certificate of participation. However, due to the subjective nature of this class and diversity of styles and forms, there will be no mark attached. Students will receive an adjudication only.

Main Instrument with Adult Accompaniment: Adjudicated class for a main instrument with an adult accompanist such as a teacher or parent.

Band and Instrumental Classes

Woodwinds	Level 1	Level 2	Level 3	Level 4	Level 5	Level 6-7	Level 8 and up
Solo Baroque	131	132	133	134	135	136	137
Solo Classical	231	232	233	234	235	236	237
Solo Romantic	331	332	333	334	335	336	337
Solo Contemporary	431	432	433	434	435	436	437
Solo Jazz or Pop	531	532	533	534	535	536	537
Woodwind Duet	631	632	633	634	635	636	637
Woodwind Trio	731	732	733	734	735	736	737
Woodwind Quartet	831	832	833	834	835	836	837

Brass	Level 1	Level 2	Level 3	Level 4	Level 5	Level 6-7	Level 8 and up
Solo Baroque	141	142	1432	144	145	146	147
Solo Classical	241	242	243	244	245	246	247
Solo Romantic	341	342	343	344	345	346	347
Solo Contemporary	441	442	443	444	445	446	447
Solo Jazz or Pop	541	542	543	544	545	546	547
Brass Duet	641	642	643	644	645	646	647
Brass Trio	741	742	743	744	745	746	747
Brass Quartet	841	842	843	844	845	846	847
Wind Brass Ensemble	931	932	933	934	935	936	937

Percussion	Level 1	Level 2	Level 3	Level 4	Level 5	Level 6-7	Level 8 and up
Percussion Solo	151	152	153	154	155	156	157
Percussion Duet	251	252	253	254	255	256	257
Percussion Trio	351	352	353	354	355	356	357
Percussion Quartet	451	452	453	454	455	456	457

Bands	Level 1	Level 2	Level 3	Level 4	Open
Concert Band	1031	1032	1033	1034	1035
Ensemble Band	1131	1132	1133	1134	1135
Stage Band	1231	1232	1233	1234	1235
Ukulele Band	1331				
Rhythm Band	1431				
Hand Bells Ensemble	1531				
Xylophones	1631				

Recorders	Level 1	Level 2	Level 3	Level 4
Recorder Solo	1731	1732	1733	1734
Recorder Duet	1831	1832	1833	1834
Recorder Trio	1931	1932	1933	1934
Recorder Quartet	2031	2032	2033	2034

Small Recorder Ensemble	2131	2132
Large Recorder Ensemble	2231	2232

Special Instrument Division			
Competitive Open Class	2331	Adjudication Only Open	2431

Instrumental Concert Class	Junior	Intermediate	Senior
Woodwind	2531	2532	2533
Brass	2631	2632	2633
Ensembles	2731	2732	2733
Diploma Class			
Competitive	2734	Adjudication Only	2735

Classical Guitar Solo	Level 1	Level 2	Level 3	Level 4	Level 5	Level 6-7	Level 8 and up
Baroque	161	162	163	164	165	166	167
Classical	261	262	263	264	265	266	267
Romantic	361	362	363	364	365	366	367
Contemporary	461	462	463	464	465	466	467
Pop	561	562	563	564	565	566	567
Jazz	661	662	663	664	665	666	667
Latin	761	762	763	764	765	766	767
Blues	861	862	863	864	865	866	867
Flamenco, Spanish, Other	961	962	963	964	965	966	967
Sacred	1061	1062	1063	1064	1065	1066	1067

Steel String – Plectrum Solo	Level 1	Level 2	Level 3	Level 4	Level 5	Level 6-7	Level 8 and up
Gospel	1161	1162	1163	1164	1165	1166	1167
Pop	1261	1262	1263	1264	1265	1266	1267
Blues	1361	1362	1363	1364	1365	1366	1367
Jazz	1461	1462	1463	1464	1465	1466	1467
Folk	1561	1562	1563	1564	1565	1566	1567
Rock	1661	1662	1663	1664	1665	1666	1667
Classical	1761	1762	1763	1764	1765	1766	1767
Contemporary	1861	1862	1863	1864	1865	1866	1867

Steel String – Finger Picking Solo	Level 1	Level 2	Level 3	Level 4	Level 5	Level 6-7	Level 8 and up
Gospel	2061	2062	2063	2064	2065	2066	2067
Pop	2161	2162	2163	2164	2165	2166	2167
Blues	2261	2262	2263	2264	2265	2266	2267
Jazz	2361	2362	2363	2364	2365	2366	2367
Folk	2461	2462	2463	2464	2465	2466	2467
Rock	2561	2562	2563	2564	2565	2566	2567
Classical	2661	2662	2663	2664	2665	2666	2667
Contemporary	2761	2762	2763	2764	2765	2766	2767
Guitar Minstrel	2831	2832	2833	2834	2835	2836	2837
Guitar Duet or Trio	2931	2932	2933	2934	2935	2936	2937
Guitar Singer/ Songwriter Minstrel	3031	3032	3033	3034	3035	3036	3037

	Age 4 and under	Age 5	Age 6	Age 7	Age 8
Beginner Strings	171	172	173	174	175

Violin, Viola, Cello or Bass	Level 1	Level 2	Level 3	Level 4	Level 5	Level 6-7	Level 8 and up	Adult
Solo Baroque	271	272	273	274	275	276	277	278
Solo Classical	371	372	373	374	375	376	377	378
Solo Romantic	471	472	473	474	475	476	477	478
Solo Contemporary	571	572	573	574	575	576	577	578
Solo Jazz or Pop	671	672	673	674	675	676	677	678
Strings Duet	771	772	773	774	775	776	777	778
Strings Trio	871	872	873	874	875	876	877	878
Strings Quartet	971	972	973	974	975	976	977	978
Self-Composed	991	992	993	994	995	996	997	998
Strings Ensemble	Pop 980	Contemporary 981		Fiddle 982	Baroque 983		Classical 984	

Fiddling	Level 1	Level 2	Level 3	Level 4	Level 5	Level 6-7	Level 8 and up	Adult
Solo Waltz	1071	1072	1073	1074	1075	1076	1077	1078
Solo Jig / Reel	1171	1172	1173	1174	1175	1176	1177	1178
Solo – Other	1271	1272	1273	1274	1275	1276	1277	1278
Fiddling Duet	1371	1372	1373	1374	1375	1376	1377	1378
Fiddling Trio	1471	1472	1473	1474	1475	1476	1477	1478
Fiddling Quartet	1571	1572	1573	1574	1575	1576	1577	1578
Fiddling Ensemble	1671	1672	1673	1674	1675	1676		

Family class (all levels)	1771	
Main instrument with accompanist	Levels 1-4	Levels 5-8 and up
	1871	1872
Main instrument with adult accompaniment	1971	1972

Speech Arts Class Descriptions

Please refer to the Honours Awards section for award descriptions.

Please refer to Rules specific to the Speech Arts Discipline before submitting entries.

Important Reminder: Please have original source books available at the Festival. A copy of the work must accompany the entry form.

Public Speaking: TBA entries are allowed in this class only. Notify the director ASAP with the entrants' names.

The selection must be the entrant's original prepared speech. Selections need not be memorized, as notes should be used (but not read from). Participants will be judged on such details as research, organization, language, and all aspects of delivery and audience appeal. Scripts are not required by the adjudicator. The topic need not appear on the entry form. Marks will be deducted if the speaker is more than one minute over or under the time allowed. Junior (11 years and under), Intermediate (12–13 years) and Senior (14–15 years) should be 3–5 minutes long and Open (over 15 years) should be 5–8 minutes. This entry is eligible for a Creative Writing Speech Award.

Choral Speech: In cases where mixed grades are in one class, please choose selections for the top grade. The Class number is that of the oldest grade (i.e. Grade 1/2 would be Class 3007). Group entries must have 8 or more participants. All classes are required to have two selections. These selections should contrast in mood, rhythm, or feeling.

Choral Drama: Involves the speaking of the text by a speech choir. Actors may then add movement, mime, solo voices and characterizations to help tell the story. Some costumes, props, music and sound effects may

be included. The group leader may assist with set-up, and may conduct the group, but should not participate verbally. No spoken voices should be on tape. Time limit for set-up and performance must not exceed 10 minutes.

Reader's Theatre: Maximum of 12 participants per group. The entrants are required to present a play or story in the Reader's Theatre script. Groups may dramatize stories or books, or use an existing reader's theatre script. Some movement is permissible, but emphasis should be on the use of the voice. Scripts must be carried, but may be used merely as props, rather than read from. Simple costumes are permissible. Time limit is 15 minutes, including set-up and performance.

Lyric Poetry: A lyric is a short unified poem, expressing the poet's own experience, thoughts and feelings. The lyric does not tell a story or contain dialogue but describes a scene or emotion in a subjective manner, and is rarely, if ever, humorous. It is usually performed in a relaxed sitting or standing position with no movement. (e.g. "The Swing" by Robert Louis Stevenson or "Daffodils" by William Wordsworth). Time limit is 3 minutes.

Narrative or Dramatic Poetry: A narrative poem tells a story and usually contains dialogue. The telling of the story is the primary concern of the speaker. A portion of a longer poem may be chosen rather than the complete work. A dramatic poem portrays a character distinct from the poet. Both types of poem are written objectively and may be humorous. Gesture may be included to enhance the telling of the story. (e.g. "Hiding" by Dorothy Aldis or "The Raven" by Edgar Allen Poe). Time limit is 6 to 7 minutes.

Sonnet: Any sonnet by any sonneteer! One own choice selection.

Poems for Two: Any type of poem may be chosen and performed by two contestants. Some of the best poems include dialogue between two characters. The best performances would include places where each voice speaks alone and in combination. Gesture and limited staging may be used to enhance the performance.

Canadian Poetry: Each performer must select a poem written by a Canadian poet

Original Poetry: Each performer shall present a poem written by himself/herself. This entry is eligible for a Creative Writing Poetry Award.

Humorous Poetry: Any form of light or humorous verse. Gesture may be included to enhance the performance.

Story Telling: The performer will be required to tell a short story. It may be original or the retelling of a known story. Stories with a clear narrative work best. Stories must be told, not read, and must be told in the entrant's own words. Good storytelling sounds spontaneous rather than memorized. The use of props is discouraged in Festival Standard storytelling. Titles to be announced at the time of the performance as scripts are not required by the adjudicator. Time limit is 5 minutes.

Impromptu Story Telling: Participants are given 2 minutes to look at a picture. They must then tell a story based on the picture. Time limit to tell the story is 2 minutes. Adjudicator will signal when participant should begin and will give a signal again 15 seconds before the participant should end.

Story Reading: Entrants will read a story from a book of their own choice. Performances will be adjudicated on vocal skill, quality of presentation, and suitability of the presentation style for the "target audience" of the particular story. Preferably, the older the participant, the more complex the story should be. Longer stories may be edited to fit the time limits. Titles are not required with the entry form. **Time limit is 5 minutes. Please edit stories to fit time limit.**

Memorized Prose: Each reading should be a complete story or a piece from a story that is complete in itself. Time must not exceed five (5) minutes.

Bible Reading: A selection from any version of the Bible. The selection should be read and should not appear memorized, except in the youngest class, where entrants may choose to present their work from memory. Participants will read from their own copy of the Bible. Please provide an additional copy of unusual versions (i.e. not King James Version) for the adjudicator. Please indicate version, book, chapter and verses on the entry form. Time limit is 3 minutes.

Sight Reading: A suitable prose selection is provided at the time of the performance. No preparation time is allowed.

Drama Division

Dramatic Scene – Monologue: A solo dramatic scene should be a speech of one character from a published play. Lines of other characters may be deleted, but the solo should be performed as if part of the whole play. Reading the entire play helps to find the character. Simple costumes and props may be used, and movement may be employed to help express the character. Indicate on the entry form: play, author, act, scene, character. Time limit is 5 minutes including title and introductions.

Dramatic Scene – Duo: A scene for two players from any play. May be adapted from a story. Scene should be staged as though taken from the complete performance. Simple costumes and props may be used. Indicate on the entry form: play, author, act, scene, character.

Dramatic Scene – Group: A scene for 3–7 players. Selection should be a play or portion of a play, or a dramatization of a story. A single scene often works best. Lines must be memorized. If used, costumes and props should be kept simple. Indicate on the entry form: play, author, act, scene, character. Time limit is 15 minutes, including introduction.

Improvisation: A team of 4 or 5 students will be given a subject by the Adjudicator. The team will have 5 minutes to prepare a scene to be acted out by them. A teacher or adult may help with the preparation but may not participate nor coach. In this class of drama section, practice really does make a difference.

Mime: Mimes may be individual or presented by groups of not more than six members. The selection is to be prepared in advance. The contestant(s) are expected to introduce the Mime with a title. Title of mime and name(s) of individuals must be on the entry form. If time is required to set up props, please indicate on entry form. No more than 3 minutes will be allowed for setting up props. Time limits for performances are: 9 and under – 5 minutes, 10-11 years – 8 minutes, 12-13, 14-15 years and Open – 10 minutes.

Puppetry: 1 to 3 puppeteers will present a puppet play using any type of puppets and staging. Original or published plays may be used. Entries will be judged on vocal skills and overall entertainment value. Include a copy of any original work with entry. Time limit is 10 minutes including set-up and performance.

Shakespeare – Solo Scene: A monologue of one character from a play by William Shakespeare. Lines of other characters may be cut, and a series of speeches performed as a monologue if the sense of the passage can be maintained. Simple costumes may be worn. Indicate on the entry form: play, act, scene and character.

Shakespeare – Duo: A scene for two from any of Shakespeare's plays, to be performed as if from the play in its entirety. Costumes and simple props may be used. Indicate on the entry form: play, act, scene, beginning and ending.

Shakespeare – Group: A scene for 3–7 players from any play by William Shakespeare, presented as if part of the whole play. Costumes and simple props may be used. Indicate on the entry form: play, act and scene.

Speech Arts Classes

	Junior	Intermediate	Senior	Open	Impromptu
Public Speaking	3000	3001	3002	3003	3004

	Grade								
	Kindergarten	1	2	3	4	5	6	7	Open
Choral Speech	3005	3006	3007	3008	3009	3010	3011	3012	3013
Choral Drama	3014	3015	3016	3017	3018	3019	3020	3021	3022
Reader's Theatre		3119	3120	3121	3122	3123	3124	3125	3126

	Age									
	5 and under	6-7	8	9	10	11	12	13-15	16-17	Open
Lyric Poetry	3023	3024	3025	3026	3027	3028	3029	3030	3031	3032
Narrative or Dramatic Poetry	3033	3034	3035	3036	3037	3038	3039	3040	3041	3042

	13 yrs and under	14-16 yrs	17-18 yrs	19-30 yrs	Open
Sonnet	3043	3044	3045	3046	3047

	Age							
	5 and under	6-7 yrs	8-9 yrs	10-11 yrs	12-13 yrs	14-15 yrs	16-17 yrs	Open
Poems for Two	3048	3049	3050	3051	3052	3053	3054	3055
Canadian Poetry	3056	3057	3058	3059	3060	3061	3062	3063

	9 and under	10-11 yrs	12-13 yrs	14-15 yrs	16-17 yrs	Open
Original Poetry	3064	3065	3066	3067	3068	3069

	Age							
	5 and under	6-7	8-9	10-11	12-13	14-15	16-17	Open
Humorous Poetry	3070	3071	3072	3073	3074	3075	3076	3077

	Age				
	9 and under	10-11	12-13	14-15	Open
Story Telling	3078	3079	3080	3081	3082

	Age				
	9 and under	10	11	12	Open
Impromptu Story Telling	3083	3084	3085	3086	3087

	8 and under	9 yrs	10-11 yrs	12-13 yrs	14-15 yrs	16-17 yrs	Open
Story Reading	3088	3089	3090	3091	3092	3093	3094

	9 yrs and under	10-11 yrs	12-13 yrs	14-15 yrs	16-17 yrs	Open
Memorized Prose	3095	3096	3097	3098	3099	3100

	7 and under	8-9 yrs	10-11 yrs	12-13 yrs	14-16 yrs	17-18 yrs	Open
Bible Reading	3101	3102	3103	3104	3105	3106	3107

	9 yrs and under	10-11 yrs	12-13 yrs	14-16 yrs	17-18 yrs	Open
Sight Reading	3108	3109	3110	3111	3012	3013

Drama Classes

	11 yrs and under	12-13 yrs	14-15 yrs	16-17 yrs	Open
Dramatic Scene – Monologue	3127	3128	3129	3130	3131
Dramatic Scene – Duo	3132	3133	3134	3135	3136

	Grade 1-3	Grade 4-7	Junior Secondary	Senior Sec.	Open
Dramatic Scene Group	3137	3138	3139	3140	3141

	Grade 4	Grade 5	Grade 6	Grade 7	Junior Secondary	Senior Sec.
Improvisation	3168	3142	3143	3144	3145	3146

	9 yrs and under	10-11 yrs	12-13 yrs	14-15 yrs	Open
Mime	3114	3115	3116	3117	3118

	9 yrs and under	10-11 yrs	12-13 yrs	14-16 yrs	17-18 yrs	Open
Puppetry	3147	3148	3149	3150	3151	3152

Shakespeare

	13 yrs and under	14-16 yrs	17-18 yrs	19-30 yrs	Open
Solo Scene	3153	3154	3155	3156	3157
Duo	3158	3159	3160	3161	3162
Group	3163	3164	3165	3166	3177

Entry Fees

Piano

Solo	Beginner / Primary Division	\$12.00 per person per class
	Junior Division	\$13.00 per person per class
	Intermediate Division	\$14.00 per person per class
	Senior Division	\$18.00 per person per class
Ensemble	Duet, Trio, Duo, Concert, Family, Student/Teacher	\$18.00 per group per class
Concert	Junior Concert Group	\$17.00 per person per class
	Intermediate Concert Group	\$20.00 per person per class
	Senior Concert Group	\$27.00 per person per class
	ARCT Concert Group	\$47.00 per person per class
Competitions	Gail Carson Romantic Competition	\$27.00 per person per class
	Senior Piano Competition	\$27.00 per person per class
Original Composition	All classes	\$12.00 per person per class

Vocal

Concert, Musical Production, Ensembles	Primary	\$14.00 per person per class
	Junior A	\$17.00 per person per class
	Junior B	\$17.00 per person per class
	Intermediate	\$20.00 per person per class
	Senior	\$27.00 per person per class
Solo Artsongs, Folksongs, Gospel, Musical Theatre, Soloist and Accompanist, Contemporary Pop, Christian, Contemporary Gospel, Sacred Song, Soloist and Obbligato Instrument, Minstrel	Primary	\$12.00 per person per class
	Junior A	\$13.00 per person per class
	Junior B	\$14.00 per person per class
	Intermediate	\$17.00 per person per class
	Senior	\$20.00 per person per class
Jazz and Blues Solo	Junior B	\$14.00 per person per class
	Intermediate	\$17.00 per person per class
	Senior	\$20.00 per person per class
Family Music		\$18.00 per group per class
Opera and Oratorio	Intermediate	\$18.00 per person per class
	Senior	\$20.00 per person per class
Choir or Ensembles	All classes	\$30.00 per group per class- Children/ Youth choirs or ensembles \$50.00 per group per class- Adult choirs
Adult Non-Competitive	All classes	\$20.00 per person per class

Band and Instrumental

Instrumental Solo	Levels 1, 2	\$12.00 per person per class
	Levels 3, 4	\$13.00 per person per class
	Levels 5, 6	\$14.00 per person per class
	Levels 7, 8	\$16.00 per person per class
Duet, Trio, Quartet, family class, instrument with accompanist, Main Instrument with Adult Accompanist		\$18.00 per group per class
Ensemble groups (such as string or ukulele ensembles)		\$30.00 per group per class
Bands		\$50.00 per group per class
Concert Class		\$24.00 per person per class
Diploma Class		\$24.00 per person per class
Self-composed		\$12.00 per person per class

Speech Arts and Drama

Public Speaking	All Classes	\$11.00 per person per class
Choral Speech	All Classes	\$22.00 per group per class
Choral Drama	All School Grades	\$22.00 per group per class
Poetry	All Classes Age 17 and under	\$12.00 per person per class
	Open	\$13.00 per person per class
Sonnet	All Classes Age 17 and under	\$12.00 per person per class
	Open	\$13.00 per person per class
Story Telling, Story Reading, Memorized Prose, Bible Reading, Sight Reading, Mime	All Classes Age 17 and under	\$12.00 per person per class
	Open	\$13.00 per person per class
Reader's Theatre	All Classes	\$13.00 per group per class
Dramatic Scene Solo, Shakespeare Solo	All Classes	\$18.00 per person per class
Dramatic Scene Duo, Shakespeare Duo	All Classes	\$18.00 per group per class
Dramatic Scene Group, Puppetry and Shakespeare Group	All Classes	\$22.00 per group per class
Improvisation	All Classes	\$12.00 per group per class

Cariboo Festival Society
629 Pinchbeck Street
Williams Lake, BC
V2G 1E6

Dear Cariboo Festival supporter,

On behalf of the Cariboo Festival Society, we would like to take this opportunity to inform you about our Society and to make a request. For the past 59 years, the Cariboo Festival has given children, youth, and adults in Williams Lake and surrounding areas the opportunity to perform in the vocal, choral, piano, band and instrumental, and the speech arts disciplines. Participants in the Festival are adjudicated by professionals in their discipline, and receive valuable instruction and feedback during the Festival immediately following each class. The top achievers represent our area in the Provincial Festival.

The volunteers who are part of the Cariboo Festival are busy preparing for the 2017 Cariboo Festival, and I hope that you might consider helping us as well. Although many dedicated volunteers help make each festival a success, financial donations are also needed in order to cover expenses. Your financial donation will help us continue to provide this great experience to the many talented people in our area.

You may choose to designate your donation toward general expenses of the Cariboo Festival, or you may wish to sponsor a trophy (approximately \$30) or bursary in one of the many disciplines. Your business or personal name will then be recognized on our Festival website www.cariboofestival.ca, prior to and during the Festival, throughout the 2017 Cariboo Festival, and at the venues. If you are interested in making a donation, please get in touch with me at any time. My contact information is below. We will send you a receipt for tax exemption.

The Festival requests that all donations be in by February 15, 2017 if possible. This will allow time to notify the jewelers to prepare awards and acknowledge your name, your company's name, or your organization's name in any of our publicity or programming. If you wish to make a donation, please contact any of our Committee members listed on our website or at the beginning of this Syllabus.

Thank you for supporting Performing Arts in Williams Lake!

Sincerely, and on behalf of the Cariboo Festival Board of Directors,

Ann Smith
President, Cariboo Festival Society

ann.smith@axis.bc.ca
Cell: 250-305-9755

